


Capacity	Accuracy	Part-Number
25 klb	N10	H9N-N10-25K-9B
40 klb	N10	H9N-N10-40K-9B
50 klb	N10	H9N-N10-50K-9B
60 klb	N10	H9N-N10-60K-9B
75 klb	N10	H9N-N10-75K-9B
100 klb	N10	H9N-N10-100K-9B
125 klb	N10	H9N-N10-125K-9B
150 klb	N10	H9N-N10-150K-9B
200 klb	N10	H9N-N10-200K-9B


RoHS




Ex NEPSA



- Alloy steel IP67 dual shear beam load cell
- High accuracy
- Suitable for track and truck scales and other weighing devices

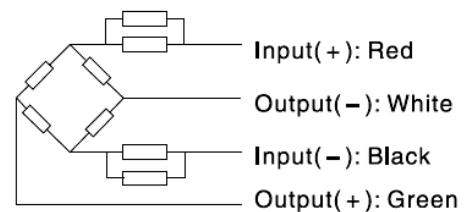
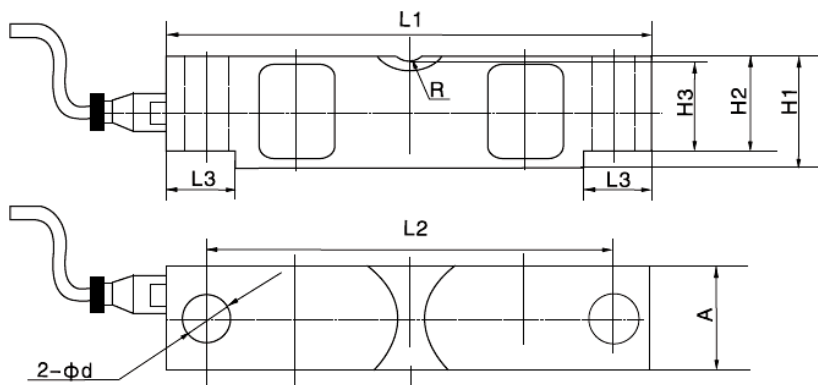




Specification:

Accuracy class		N10		
Output sensitivity (= FS)	mV/V	3.0 ± 0.003		
Maximum capacity (E _{max})	klb	25, 40, 50, 60, 75, 100, 125, 150, 200		
Maximum number of load cell intervals (n _{LC})		10000		
Ratio of minimum LC verification interval Y = E _{max} / V _{min}		7500		
Combined Error	%FS	± 0.020		
Safe overload	of E _{max}	150 %		
Ultimate overload	of E _{max}	300 %		
Zero balance	of FS	< ± 1.0 %		
Excitation, recommended voltage	V	5 ~ 12		
Excitation maximum	V	18		
Terminal resistance, input	Ω	700 ± 7		
Terminal resistance, output	Ω	703 ± 4		
Insulation impedance	MΩ	≥ 5000 (at 50VDC)		
Temperature range, compensated	°C	-10 ~ +40		
Temperature range, operating	°C	-35 ~ +65		
Element material		Alloy steel		
Ingress Protection (according to EN 60529)		IP67		
ATEX classification (optional)		II1G Ex ia II1C T4	II1D Ex iaD 20 T73°C	II3G nL IIC T4

Outline Dimensions in mm



Dimension \ Capacity	L1	L2	L3	H1	H2	H3	A	ϕd	R
25	197 (7.75)	165 (6.5)	35 (1.38)	49.3 (1.94)	43.2 (1.7)	41.4 (1.63)	43 (1.7)	17.3 (0.68)	19.1 (0.75)
40	260.4 (10.25)	216 (8.5)	49.3 (1.94)	62 (2.44)	53.3 (2.1)	50.8 (2)	49.3 (1.94)	20.6 (0.81)	25.4 (1)
50 ~ 75	260.4 (10.25)	216 (8.5)	49 (1.93)	74.7 (2.94)	67.3 (2.65)	64.5 (2.54)	62 (2.44)	26.9 (1.06)	25.4 (1)
100 ~ 125	387.4 (15.25)	324 (12.76)	79.5 (3.13)	98 (3.86)	87.1 (3.43)	83.8 (3.3)	73.7 (2.9)	41.2 (1.62)	38.1 (1.5)
150~200	489 (19.25)	387.4 (15.25)	127.8 (5.03)	147.3 (5.8)	130.1 (5.12)	112.8 (4.44)	96.5 (3.8)	41.2 (1.62)	50.8 (2)

Wiring:

- Shielded, 4 conductor cable.
- Standard cable length: 9m.
- Cable type and cable length for customer's own application are available on request.
- Shield not connected to body.

Please visit our website WWW.ZEMIC.NL for the most actual information.

Nr. 2010.08 H9N Rev2